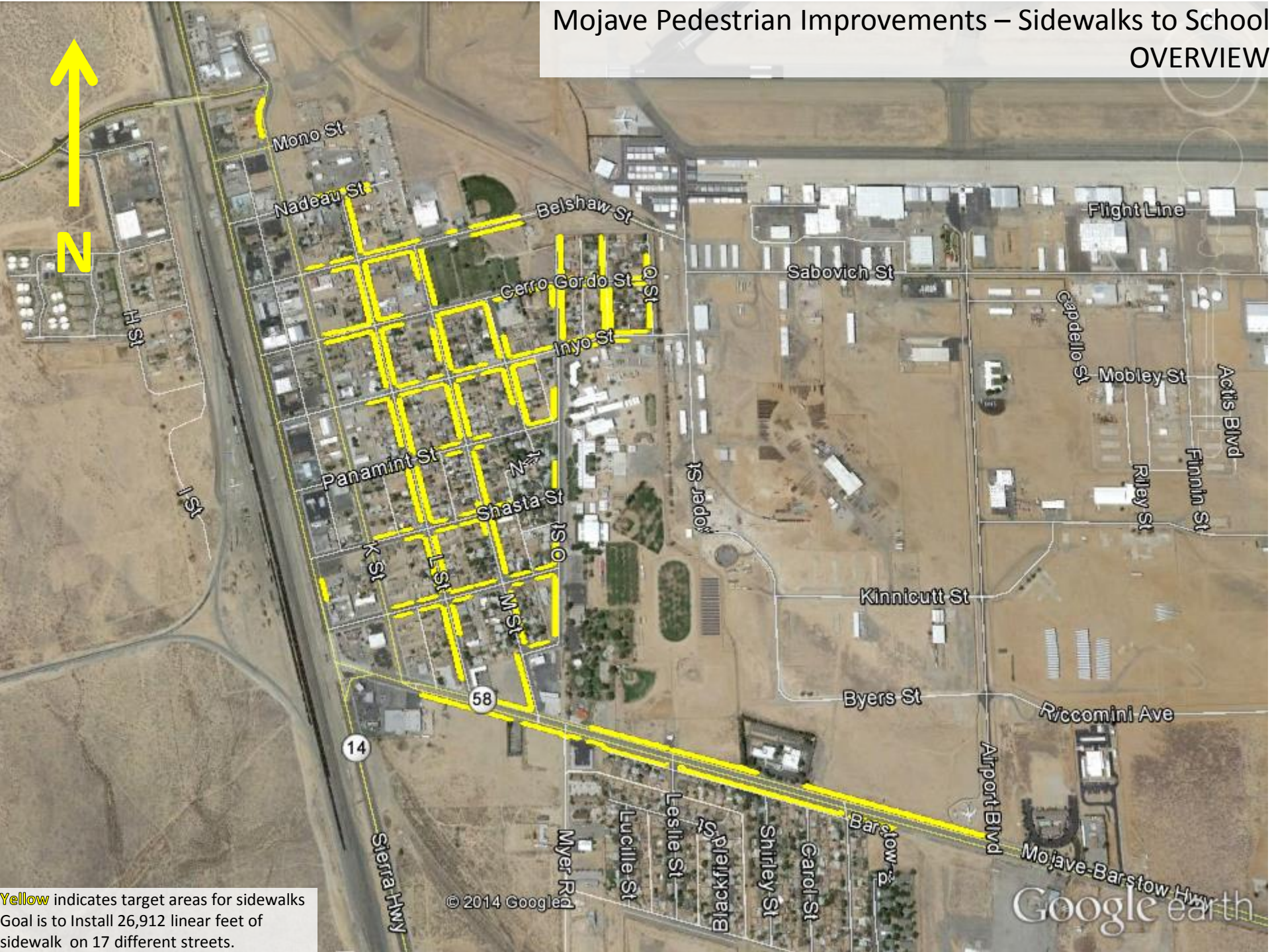


# Mojave Pedestrian Improvements – Sidewalks to School

## OVERVIEW



Yellow indicates target areas for sidewalks  
Goal is to Install 26,912 linear feet of  
sidewalk on 17 different streets.

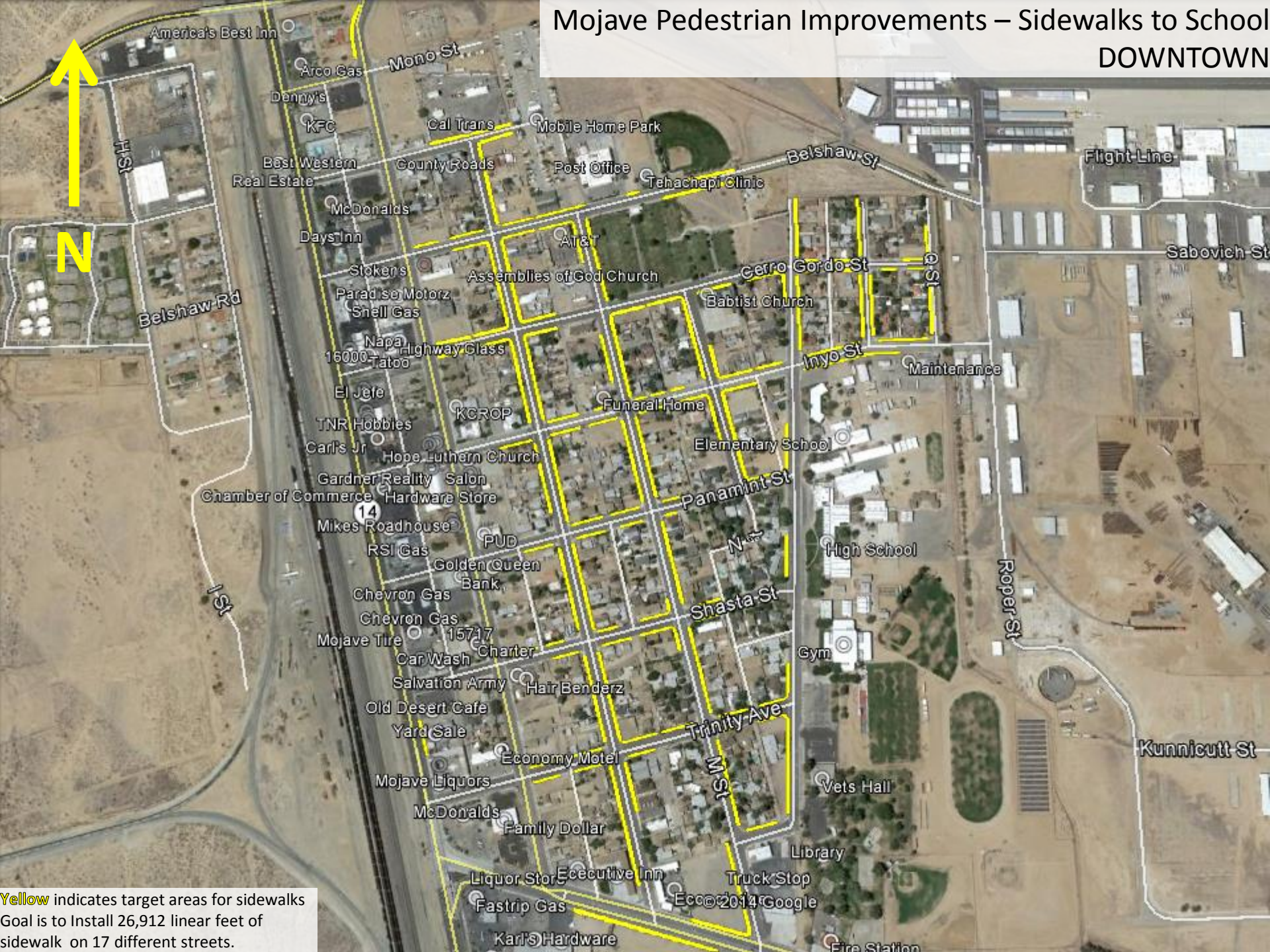
© 2014 Google

Google earth



# Mojave Pedestrian Improvements – Sidewalks to School

## DOWNTOWN



Yellow indicates target areas for sidewalks  
Goal is to Install 26,912 linear feet of  
sidewalk on 17 different streets.



(1) Mojave Pedestrian Improvements – Sidewalks to School  
HWY-58, BARSTOW RD: Sidewalks, Curb & Gutter, Curb Ramp, Block Wall



Also requires 6,384 linear feet of Curb & Gutter  
along HWY-58 and Barstow Rd.



## (2) Mojave Pedestrian Improvements – Sidewalks to School

### HWY-58, BARSTOW RD: Sidewalks, Curb & Gutter, Curb Ramp, Block Wall



Also requires 6,384 linear feet of Curb & Gutter along HWY-58 and Barstow Rd.



### (3) Mojave Pedestrian Improvements – Sidewalks to School

HWY-58, BARSTOW RD: Sidewalks, Curb & Gutter, Curb Ramp, Block Wall



Also requires 6,384 linear feet of Curb & Gutter along HWY-58 and Barstow Rd.